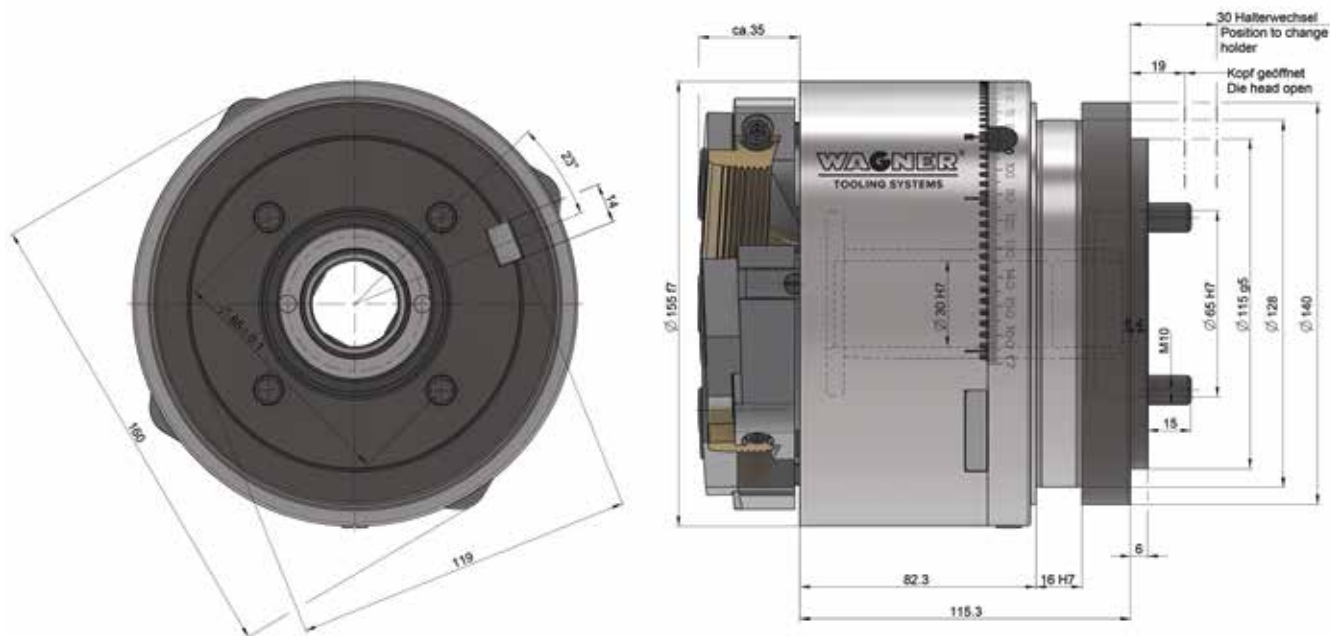


Thread cutting system Z39-K-2

Design for
tapered threads



Thread cutting system for tapered threads Z39-K-2

Weight 23 kg

	mm	inch
Max. pitch	2,309	11 t.p.i.

Working range pipe thread	R1/8–2" DIN EN 10226 1/4-18–2 - 11.5NPT ANSI B1.20.1
---------------------------	--

Eccentric rings and chaser holders	see table for holders
------------------------------------	-----------------------

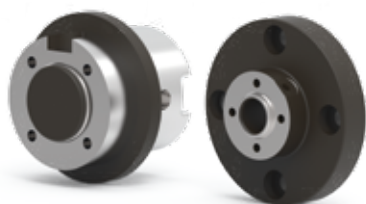
Accessories:

Setting device with dial gauge



Accessories:

Shanks and flanges on request



Accessories:

Toothed segments Z39-K-2 (set = 10 pieces)



Toothed segments ensure an interlocking connection between the guide ring and the eccentric ring, thus preventing unintentional adjustment of the machining diameter.

Toothed segments are mainly used when the cutting systems are used in a reversing manner or the tool spindles are stopped abruptly after thread cutting.

Accessories:

Control ring Z39-K-2

